

SJEC
Elevators & Escalators
since 1992

Download **PDF** Catalog



■ Login User * Password
een sjecen



SJEC-0-ESCP-20230110

We reserve the right to alter some of specificationa and descriptions given here in without prior notices

ESCALATOR & PASSENGER CONVEYOR

**A Committed,
Reliable & Responsible
Elevator & Escalator
Manufacturer since 1992**

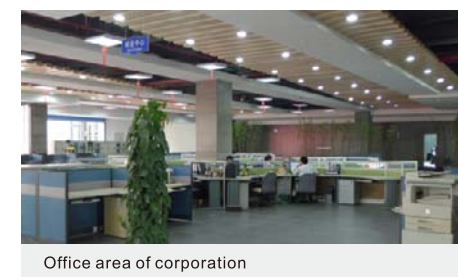
In The Business of Sharing Success



Pavilion of corporation



Corridor of corporation



Office area of corporation



SMT Products Line

CORPORATION DATA:

- Land area: 200000m²,
- Manufacturing area: 140000m²,
- Test tower height: 140m,
- Manpower: 2700

ANNUAL MANUFACTURING CAPACITY:

- 20000 units elevators,
- 10000 units escalators and moving walks

INTERNATIONAL CERTIFICATION:

- ISO9001, ISO14001, ISO45001 by DNV, SA8000 by TÜV
- Products Certificates by TÜV

MARKETING:

- Products sold over 100 countries around the world. Such as Asia, Europe, Oceania, Africa, America and etc.



KUKA Robot



SAVANINI Products Line



Workshop

MANUFACTURE FACILITY

Believed that best quality comes from the best equipment, SJEC has imported the world's first class facilities. At present, SJEC has 6 sheet metal lines, SMT automatic electronic product line, SALVAGNINI flexible product lines, KUKA robots, welding robots, escalator assembly product lines, etc. All these can well guarantee our manufacturing quality.

GOOD APPEARANCE

As a part of the building, appearance of escalator should be harmonious with architecture style. A variety of appearance solution could be designed. Outer cladding of escalator could be provided by SJEC or by local to be suitable to architecture.



Color plate



LED spot lighting



Hairline Stainless Steel
LED spot lighting



Ti-Aluminum plate
LED spot lighting



Mirror Stainless Steel
LED spot lighting



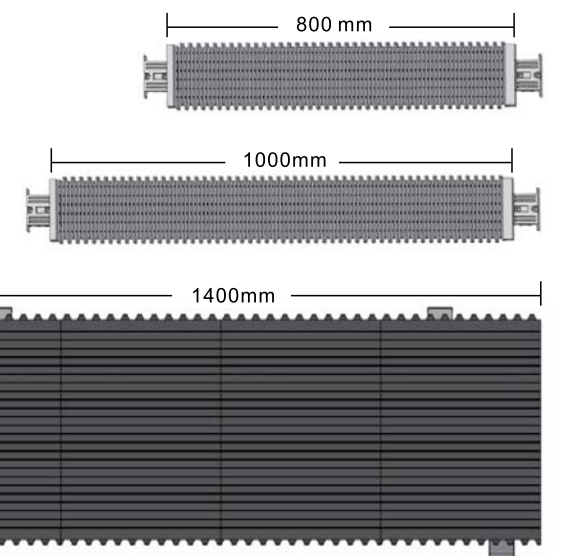
Glass outer cladding



HANDRAIL (Different color as option)



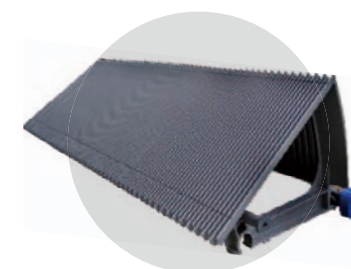
Various optional specifications are available, such as appearance options according to different architecture style, and the functions according to clients' requirements.



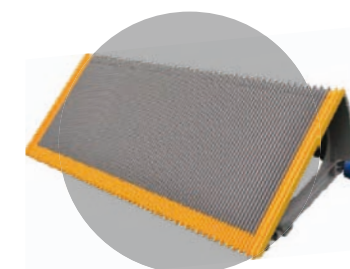
PALLETS

Die-cast aluminum 800~1400mm

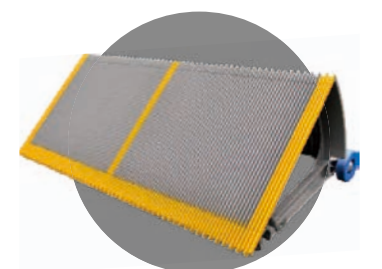
STEP



Aluminum alloy Die-cast
(gray color as default)



Aluminum alloy Die-cast
With yellow synthetic resin
(gray color as default)



Aluminum alloy Die-cast
With yellow painted line
(gray color as default)

OPTIONAL FEATURES



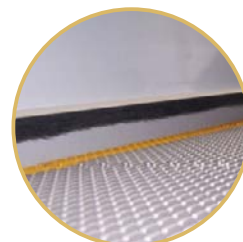
Handrail Entrance



Combs Lighting



Anti-climb Device



Skirting Brush



Skirting Lighting

FES Escalator

Silence and comfort. The new generation has inherited the traditional safety, reliability, high efficiency style and combined with updated market trends as well as tailored solutions. It is widely used for shopping malls, Hotels, office blocks and etc.

Type	FES
Inclination	30° /35°
Step width(mm)	600/800/1000
Horizontal step run (mm)	800/1200
Speed (m/s)	0.5
Power supply	AC 3 phase.5 wire50Hz/60Hz
Installation position	Indoor/ Outdoor
Rise(m)	2~6/8.3 (Details as following)



Rise (m)	Inclination	Horizontal step Qty
2~6	30°/35°	2
2~8.3	30°	3

Type	Standard	Optional
Balustrade design	Vertical safety glass (10mm safety tempered glass)	
Balustrade profile	Q235/SS	
Handrail	Black	Other colors
Deckings	Hairline SS	
Skirting panel	Hairline SS	
Step	Aluminum alloy Die-cast, gray color	
Landing plate	Punched SS	Etched SS/Extrude aluminum
Operation panel	Red emergency stop button and up/down key switch	



FEH/FEH20 Escalator

Weatherproof and unique balustrade design, conform to special customer specifications. It is suit for airport, subway and overpass etc.

Specs	Escalator	
Type	FEH	FEH20
Inclination	23.2°/27.3°/30°/35°	30°
Step width(mm)	600/800/1000	
Horinzontal step run(mm)	800/1000/1200	1200/1600
Upper radius	1500/2700	2700/4000
Speed(m/s)	0.5/0.65	
Power supply	AC 3 phase 5 wire 50Hz/60Hz	
Installation position	Indoor/Outdoor	
Rise(m)	2-15	3-50
Roller diameter(mm)	φ80	φ100
Roller position	Inside the chain link	Outside the chain link



Type	Standard	Optional
Balustrade design	Vertical safety glass(10mm safety tempered glass)	Inclined SS
Balustrade profile	Hairline SS	
Handrail	Black	Other colors
Deckings	Hairline SS	
Skirting panel	Hairline SS	
Step	Aluminum alloy Die-cast, gray color	
Landing plate	Etched Stainless steel	Extrude aluminum with surface of stainless steel/Extrude aluminum
Operation panel	Red emergency stop button and up-down key switch	



Passenger Conveyor

Is reliable, high efficiency, easy for maintenance , which is suit for hypermarket and airport .

Specs	Passenger conveyor		
Type	FET	FEF	FEW
Inclination	10° 11° 12°	10° 11° 12°	0° — 6°
Pallet width (mm)	800/1000	800/1000	1000/1200/1400
Horizontal pallet run (mm)	400(upper landing)	400	N/A
Speed (m/s)	0.5		
Power supply	AC 3 phase.5 wire50Hz/60Hz		
Installation position	Indoor/Outdoor		
Rise/Length(m)	H: 2~8.3	H: 2~8.3	L: 20~120



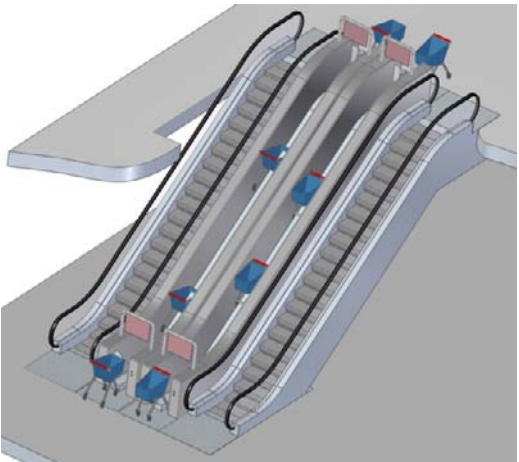
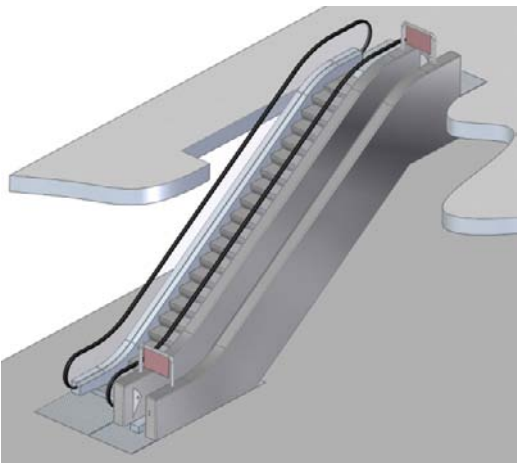
Type	Standard	Optional
Balustrade design	Vertical safety galss(10mm safety tempered glass)	Inclined SS for FEW
Balustrade profile	Hairline SS	
Handrail	Black	Other colors
Deckings	Hairline SS	
Skirting panel	Hairline SS	
Pallet	Die-cast aluminum	
Landing plate	Punched SS	Etched SS/Extrude aluminum
Operation panel	Red emergency stop button and up-down key switch	



FEB Trolley Conveyor

A shopping carts/trolleys transportation system with high efficiency, small installation space, low energy consumption. Usually installed besides escalators, separate person / trolley into 2 ways for better safety and convenience.

Type	FEB
Inclination	30° / 35°
Speed (m/s)	0.5
Power supply	AC 3 phase, 5 wire, 50Hz/60Hz
Installation position	Indoor
Rise	2~6m



Spec	Standard	Optional
Cladding	Q235	SS
Guide rail	Hairline SS	
Landing plate	Anti-skidding SS	
Operation panel	Red emergency stop button, start key switch	

NOTE:
The cart shall be suitable to the conveyor. It is recommended to be ordered from us.
Trolley conveyor is not compliant with and in scope range of EN115.

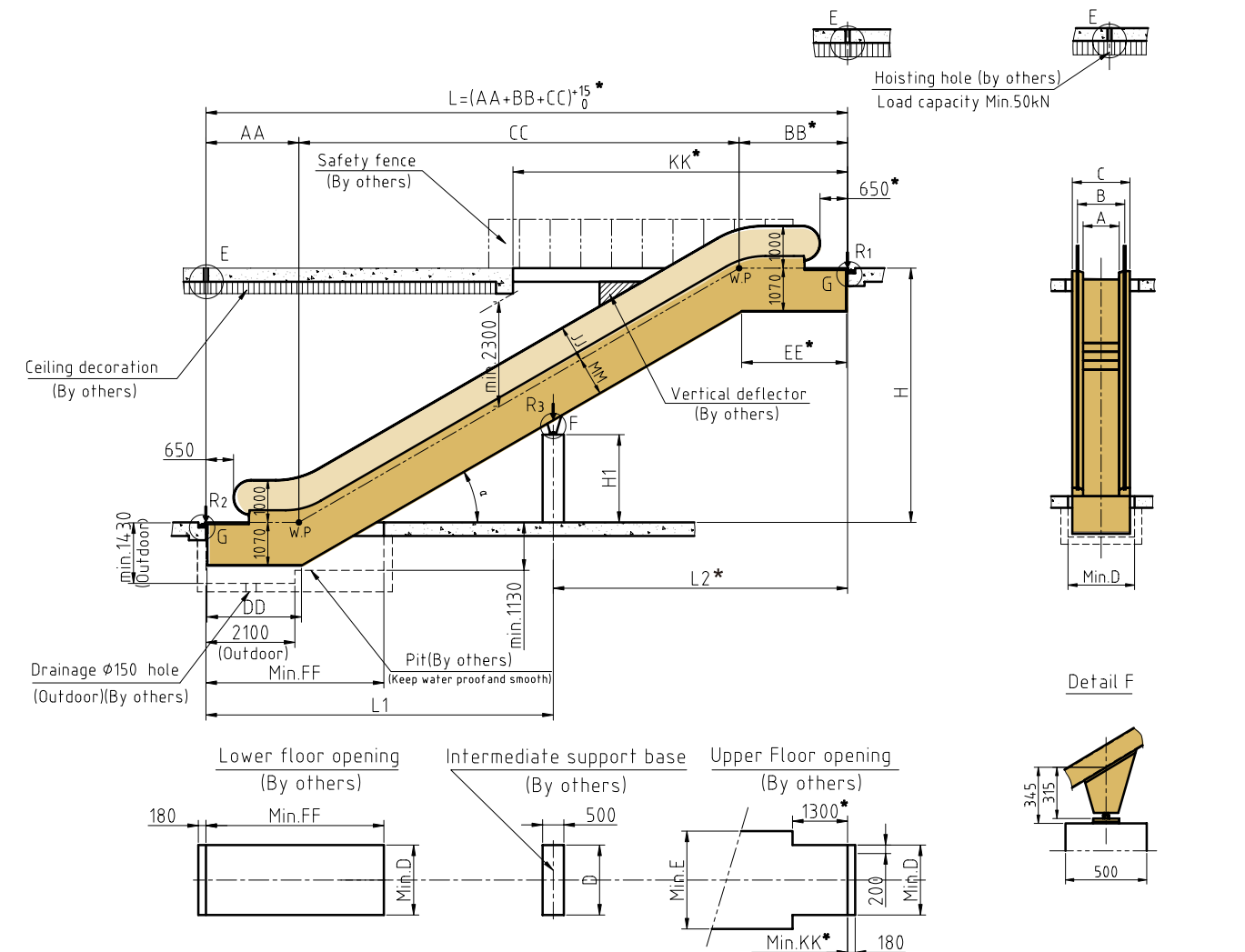


Features

FUNCTIONS	FES	FEH	FEH20	FET/FEF	FEW
Stop button	●	●	●	●	●
Key switch	●	●	●	●	●
Handrail entrance contact	●	●	●	●	●
Pallet/Step-chain broken contact	●	●	●	●	●
Pallet/Step sag contact	●	●	●	●	●
Phase monitor	●	●	●	●	●
Zinc steel flying wheel cover	●	●	●	●	●
Pallet/Step reversing fences	●	●	●	●	●
Motor overload	●	●	●	●	●
Motor overheat	●	●	●	●	●
Comb contact	●	●	●	●	●
Maintenance interlock	●	●	●	●	●
Alarm buzzer	●	●	●	●	●
Overspeed & unintended reversal monitor	●	●	●	●	●
Handrail anti-static roller	●	●	●	●	●
Pallet/Step anti-static brush	●	●	●	●	●
Service brake release contact	●	●	●	●	●
Soft stop	●	●	●	●	●
Handrail speed monitor	●	●	●	●	●
Switchboard/power box	●	●	●	●	●
Landing plate switch	●	●	●	●	●
Alarm for stop distance overrun	●	●	●	●	●
Pallet/Step missing contact	●	●	●	●	●
Auto lubrication system (with oil collector)	●	●	●	●	●
LCD fault display (on the outer decking)	●	●	●	●	●
Earth leakage circuit-breaker for illumination circuit	●	●	●	●	●
Fire interface (110V)	●	●	●	●	●
Step upthrust contact	●	●	●	X	X
Safety brake on main shaft	○	●	●	○	○
Additional emergency stop device	○	○	○	●	○
Skirting contact	○	○	○	X	○
Pallet/Step gap illumination	○	○	○	○	○
Broken drive-chain contact	○	○	○	○	○
4 dry contacts for remote monitoring	○	○	○	○	○
Skirting lighting	○	○	○	○	○
LED comb lighting	○	○	○	○	○
Balustrade lighting	○	○	○	○	○
LED traffic light	○	○	●	○	○
Machine room lighting	○	○	○	○	○
Cable connector for divided pieces	○	○	○	○	○
Special requirement for cable	○	○	○	○	○
Handrail broken contact	○	○	○	○	○
Machine room stair	○	○	○	○	○
Outside cladding	○	○	○	○	○
Fire interface (24V)	○	○	○	○	○
Skirting brush	○	○	○	○	○
Anti-climb device	○	○	○	○	○
Semi-outdoor installation package	○	○	○	○	○
Outdoor installation package	○	○	○	○	○
Comb heater	○	○	○	○	○
Truss and comb heater	○	○	○	○	○

● Standard ○ Optional X Not available

FES Layout for Commercial Escalator



For slim-vertical balustrade

A	600	800	1000
B	837	1037	1237
C	1145	1345	1545
D	1200	1400	1600
E	1720	1920	2120

Type	a	AA	BB	CC	DD	EE	FF	JJ	KK	MM
FES-302	30°	2195	2449	H X 1.732	2238	2357	4200	870	7800	960
FES-352	35°	2229	2510	H X 1.428	2386	2304	4000	850	7000	980
FES-303	30°	2595	2964	H X 1.732	2638	2871	4600	870	8300	960

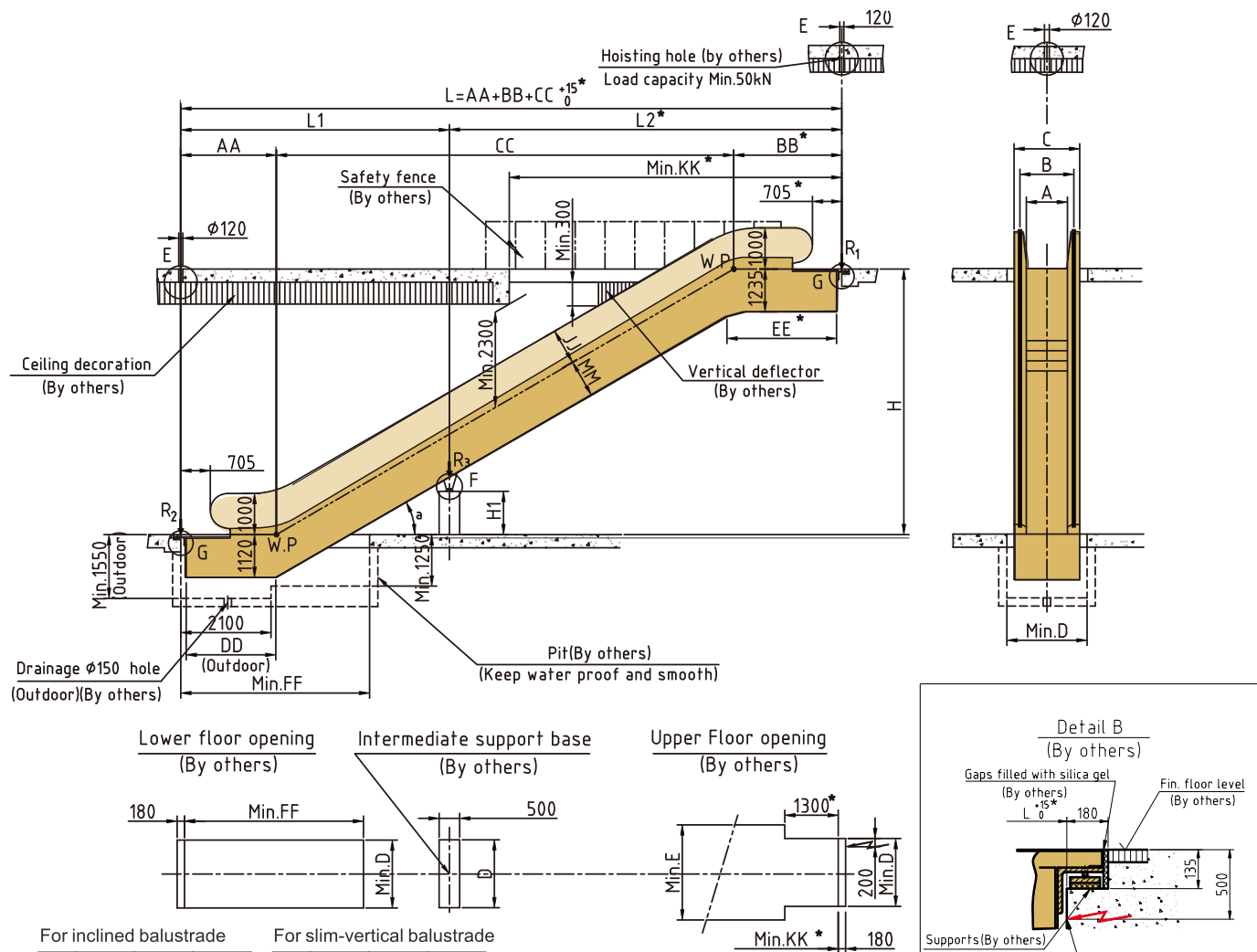
A	Reaction Force (KN)	
	W/o intermediate support	With one intermediate support
600	R1=3.35×L+15.5	R1=3.35×L2+11.5
	R2=3.35×L+10	R2=3.35×L1+4.5
800	R1=3.7×L+17	R1=3.7×L2+12
	R2=3.7×L+11	R2=3.7×L1+4.7
1000	R1=4.15×L+18.5	R1=4.15×L2+12.5
	R2=4.15×L+11.5	R2=4.15×L1+4.9

Note: 1.L, L1, L2 is in meter

NOTE:

- Height above sea level
Height above sea level of the placed escalators shall be no greater than 1000m.in case of particular,please contact SJEC.
- If one of the following situations is met, the dimensions with mark * shall be extended 500mm
(1) 600 mm step.
(2) double drive .
(3) Main power 200V grade and motor power more than 7.5KW.
- Client shall provide the intermediate support base which can be made by the reinforced concrete or metallic structure in right position in case of horizontal distance L over 15 m.
- The requirements for the interface between the escalator and the building shall meet the national standard(EN115-1:2017).
If doubt, please contact SJEC

FEH Layout for Public Service Escalator



For inclined balustrade				For slim-vertical balustrade			
A	600	800	1000	A	600	800	1000
B	910	1110	1310	B	837	1037	1237
C	1195	1395	1595	C	1195	1395	1595
D	1270	1470	1670	D	1270	1470	1670
E	1790	1990	2190	E	1790	1990	2190

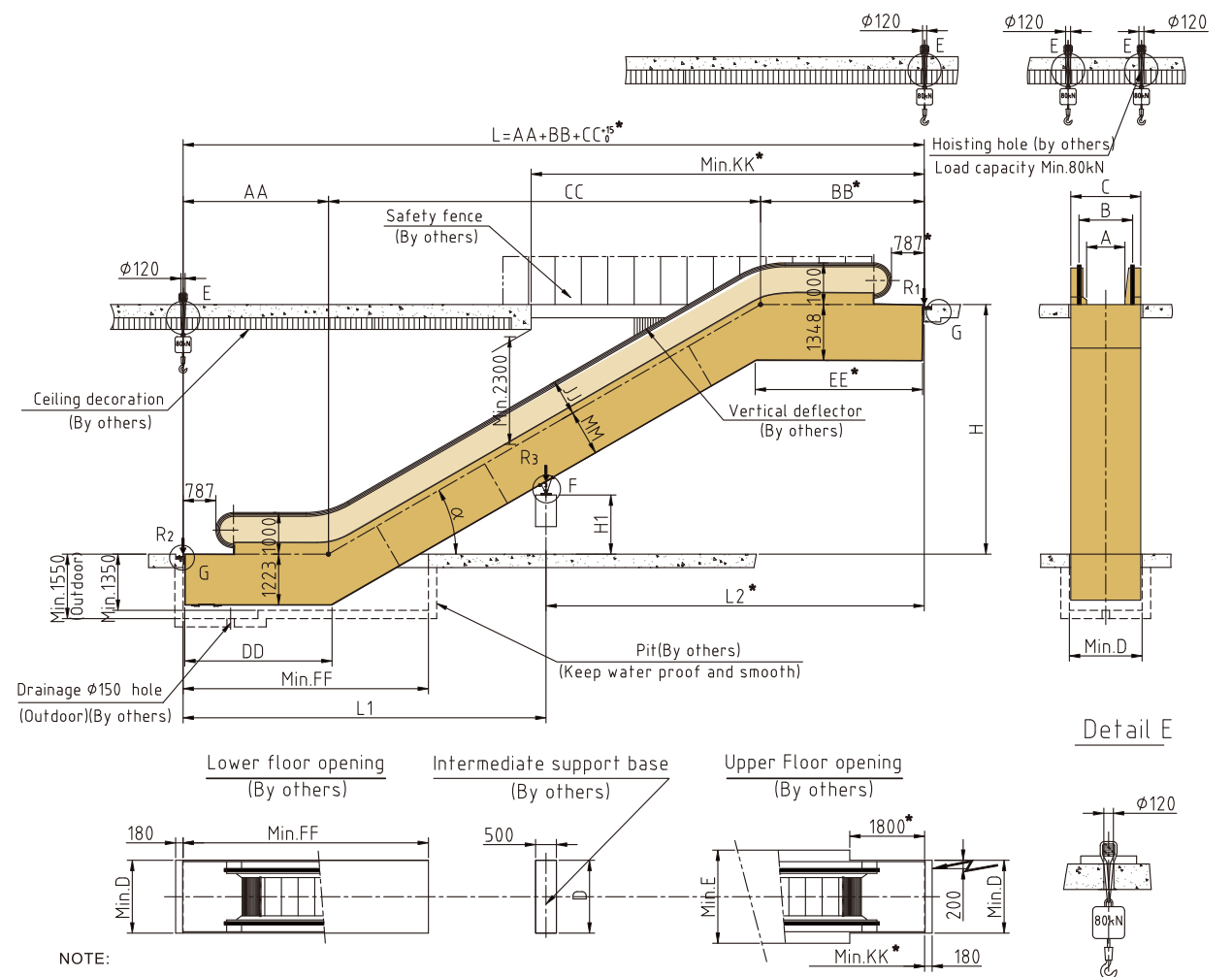
A	Reaction Force (KN)	
	W/o intermediate support	With one intermediate support
600	$R1=4.05 \times L + 16.3$	$R1=4.05 \times L2 + 14$
	$R2=4.05 \times L + 8.5$	$R2=4.05 \times L1 + 7$ $R3=4.2 \times L + 10$
800	$R1=4.45 \times L + 17$	$R1=4.45 \times L2 + 16$
	$R2=4.45 \times L + 9.5$	$R2=4.45 \times L1 + 7.5$ $R3=4.7 \times L + 11$
1000	$R1=4.95 \times L + 19.5$	$R1=4.95 \times L2 + 17.2$
	$R2=4.95 \times L + 10.5$	$R2=4.95 \times L1 + 8.3$ $R3=5.2 \times L + 11.3$
Note:	L, L1 and L2 is in meter	

Note: L, L1 and L2 is in meter

Type	a	Upper radius	AA	BB	CC	DD	EE	FF	JJ (for inclined balustrade)	JJ (for vertical balustrade)	MM	KK
FEH233	23.2°	1500	2705	3010	Hx2.333	2675	3522	5500	900	918	1030	10300
FEH273	27.3°	1500	2722	3086	Hx1.938	2808	3412	5200	881	899	1050	9100
FEH302	30°	1500	2255	2625	Hx1.732	2405	2845	4600	870	870	1060	8000
FEH303	30°	1500	2655	3025	Hx1.732	2805	3274	5000	870	870	1060	8400
FEH352	35°	1500	2290	2709	Hx1.428	2543	2808	4400	850	850	1080	7200
FEH233	23.2°	2700	2910	3258	Hx2.333	2880	3770	5800	900	918	1030	10500
FEH234	23.2°	2700	3310	3658	Hx2.333	3280	4170	6200	900	918	1030	10900
FEH273	27.3°	2700	2969	3377	Hx1.938	3054	3704	5500	881	899	1050	9400
FEH274	27.3°	2700	3369	3777	Hx1.938	3454	4104	5900	881	899	1050	9800
FEH303	30°	2700	2887	3310	Hx1.732	3037	3530	5200	870	870	1060	8700
FEH304	30°	2700	3287	3710	Hx1.732	3437	3930	5600	870	870	1060	9100

We reserve the right to alter some of specifications and descriptions given here in without prior notices.

FEH20 Layout for Public Service Escalator



NOTE:

- 1.Height above sea level
Height above sea level of the placed escalators shall be no greater than 1000m.in case of particular,please contact SJEC.
- 2.If one of the following situations is met, the dimensions with mark shall be extended 500mm
 - (1) 600 mm step.
 - (2) double drive.
 - (3) Main power 200Vgrade and motor power more than 7.5KW.
- 3.Client shall provide the intermediate base which can be made by reinforced concrete or metallic structure in right position in case of horizontal distance L over 15 m.
- 4.The requirements for the interface between the escalator and the building shall meet the national standard(EN115-1:2017).
If doubt, please contact SJEC
- 5.V:Inclined Balustrade
T:Vertical Balustrade

TYPE	a	Upper radius	AA	BB	CC	DD	EE	FF	JJ	MM	KK
FEH303	30°	2700	3095	3535	Hx1.732	3141	3624	5600	866	1103	9050
FEH304	30°	2700	3495	3935	Hx1.732	3541	4024	6000	866	1103	9450
FEH303	30°	4000	3363	3884	Hx1.732	3410	3973	5900	866	1103	9400
FEH304	30°	4000	3763	4284	Hx1.732	3810	4373	6300	866	1103	9800
FEH273	27.3°	2700	3054	3457	Hx1.937	3022	3690	5700	889	1091	9700
FEH274	27.3°	2700	3454	3857	Hx1.937	3422	4090	6100	889	1091	10100
FEH273	27.3°	4000	3297	3734	Hx1.937	3266	3967	6000	889	1091	10000
FEH274	27.3°	4000	3697	4174	Hx1.937	3666	4367	6400	889	1091	10400
FEH233	23.2°	2700	2996	3340	Hx2.333	2823	3723	6000	919	1073	10800
FEH234	23.2°	2700	3396	3740	Hx2.333	3223	4123	6400	919	1073	11300
FEH233	23.2°	4000	3201	3607	Hx2.333	3028	3990	6200	919	1073	11100
FEH234	23.2°	4000	3601	4007	Hx2.333	3428	4390	6600	919	1073	11500

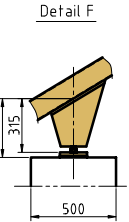
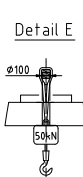
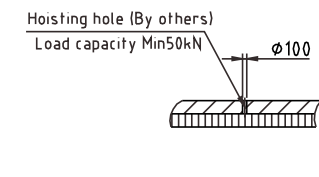
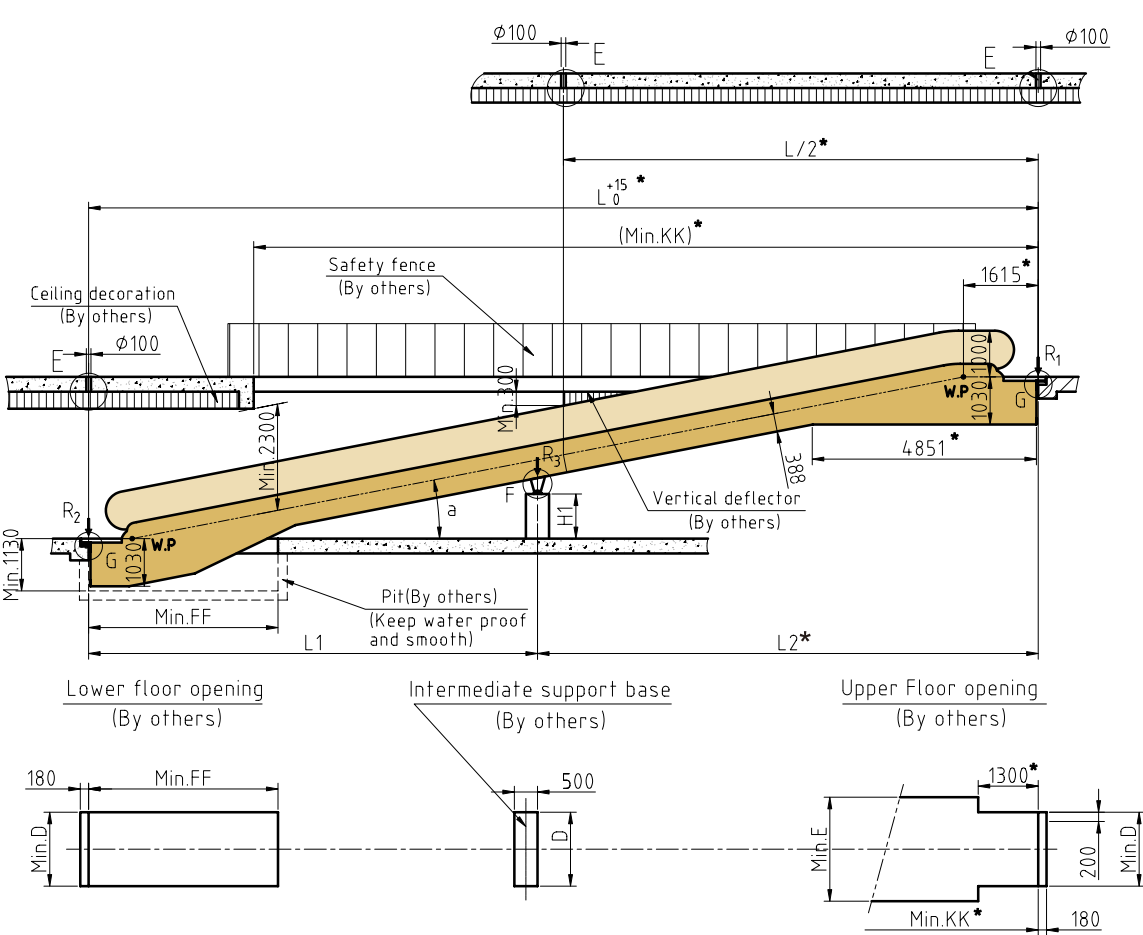
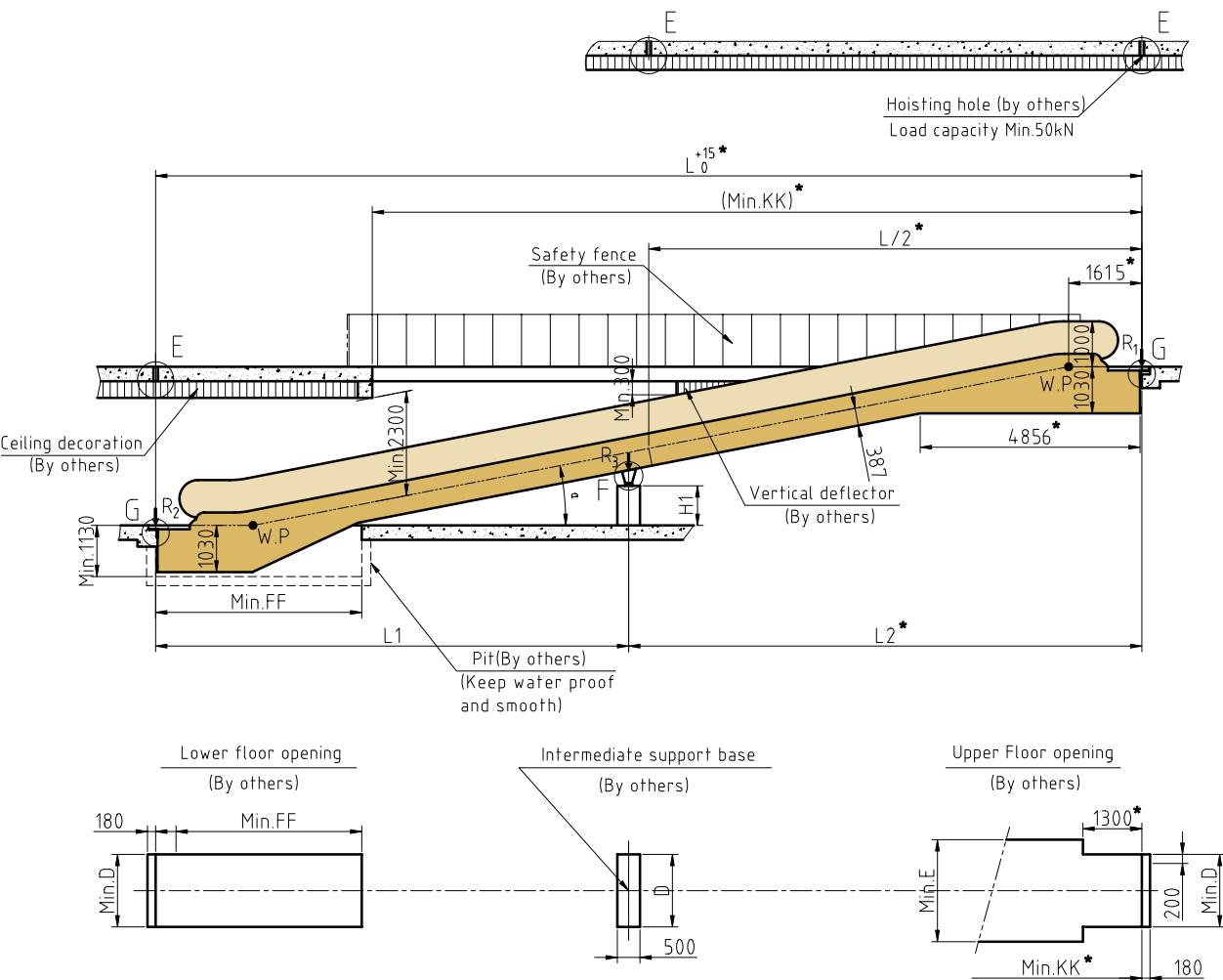
A	B		C		D		E	Reaction Force (kN) one support	more intermediate supports
	V	T	V	T	V	T			
600	890/950	950	1283	1343	1340	1410	1840	For reaction force of step width 600mm and 800mm, please contact with R&D department. R1=5.5°L2+17.2 R2=5.5°L1+8.3 R3=7.5°L1+11.3	the horizontal distances between each supports must be less than 15m. And the reaction force is calculated based on the sum of distances to its adjacent supports
800	1090/1150	1150	1483	1543	1540	1610	2040		
1000	1290/1350	1350	1683	1743	1740	1810	2240		
Note: 1. L,L1 and L2 is in meter.2. L1 and L2 do not exceed 15m									

Note: 1. L, L1 and L2 is in meter. 2. L1 and L2 do not exceed 15m

We reserve the right to alter some of specifications and descriptions given here in without prior notices.

FEF Layout for Passenger Conveyor

FET Layout for Passenger Conveyor



A	800	1000
B	1037	1237
C	1345	1545
D	1400	1600
E	1920	2120

Type	A	L	KK	FF
FEF10	10°	H×5.671+3945	17700	4750
FEF11	11°	H×5.145+3755	16700	4550
FEF12	12°	H×4.705+3595	15800	4500

NOTE:

1. Height above sea level
Height above sea level of the placed moving walks shall be no greater than 1000m. in case of particular, please contact SJEC.

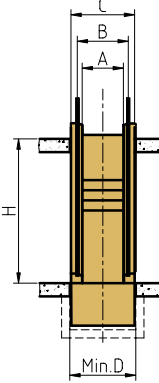
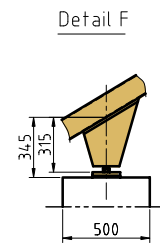
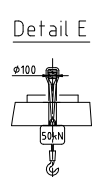
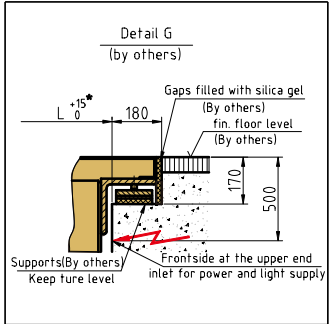
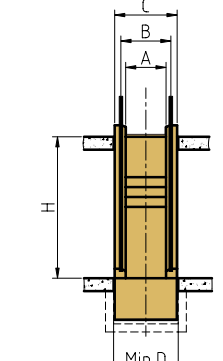
2. If one of the following situations is met, the dimensions with mark* shall be extended 500mm
(1) double drive.
(2) Main power 200V grade and motor power more than 7.5KW.

3. Client shall provide the intermediate support base which can be made by the reinforced concrete or metallic structure in right position in case of horizontal distance L over 10 m.

4. The requirements for the interface between the escalator and the building shall meet the national standard (EN115-1:2017). If doubt, please contact SJEC

A	Reaction Force (KN)
800	R1=3.45×L2+12.5 R2=3.45×L1+4 R3=4×L+14.5
1000	R1=3.85×L2+14 R2=3.85×L1+4.5 R3=4.5×L+15.5

Note: 1. L, L1 and L2 is in meter
2. L1 and L2 do not exceed 10m
3. Applicable in case of one intermediate support, or else, contact us



A	800	1000
B	1037	1237
C	1345	1545
D	1400	1600
E	1920	2120

Type	A	L	KK	FF
FET10	10°	H×5.671+2650	17700	4250
FET11	11°	H×5.145+2555	16700	4150
FET12	12°	H×4.705+2475	15800	4000

NOTE:

1. Height above sea level
Height above sea level of the placed moving walks shall be no greater than 1000m. in case of particular, please contact SJEC.

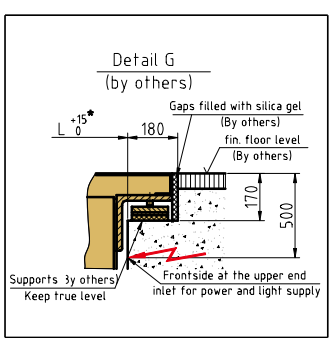
2. If one of the following situations is met, the dimensions with mark* shall be extended 500mm
(1) double drive.
(2) Main power 200V grade and motor power more than 7.5KW.

3. Client shall provide the intermediate support base which can be made by the reinforced concrete or metallic structure in right position in case of horizontal distance L over 10 m.

4. The requirements for the interface between the escalator and the building shall meet the national standard (EN115-1:2017). If doubt, please contact SJEC

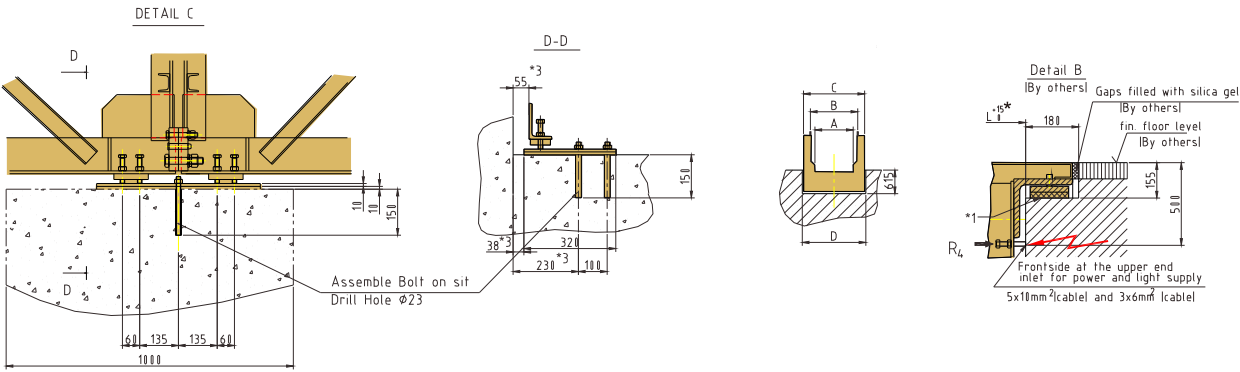
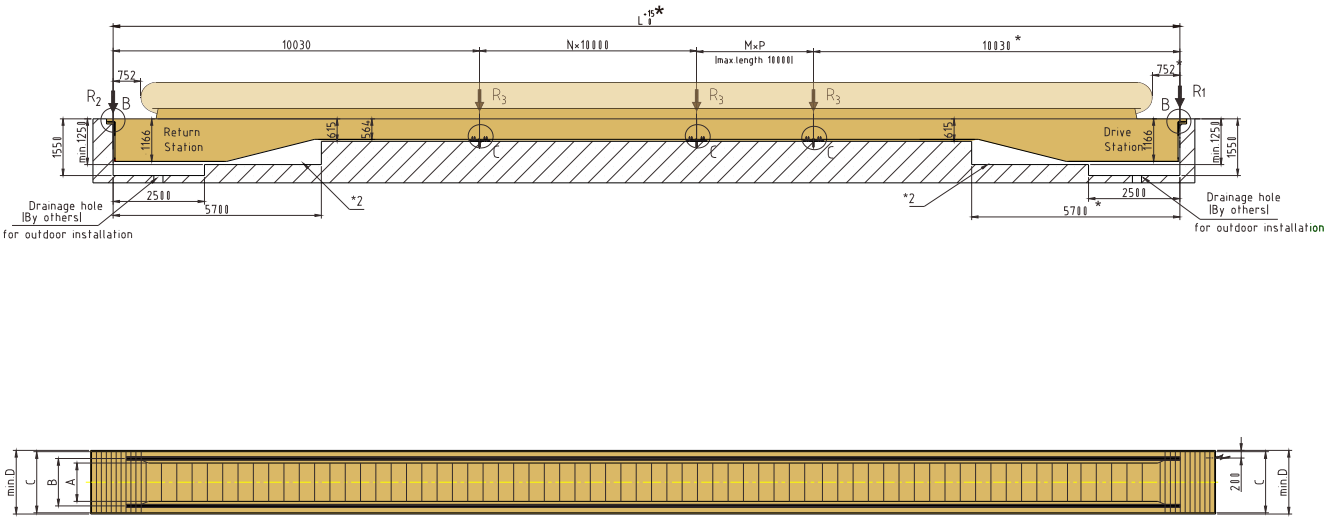
A	Reaction Force (KN)
800	R1=3.45×L2+12.5 R2=3.45×L1+4 R3=4×L+14.5
1000	R1=3.85×L2+14 R2=3.85×L1+4.5 R3=4.5×L+15.5

Note: 1. L, L1 and L2 is in meter
2. L1 and L2 do not exceed 10m
3. Applicable in case of one intermediate support, or else, contact us



FEW Layout for Passenger Conveyor

FEB Layout for Trolley Conveyor



Inclined balustrade

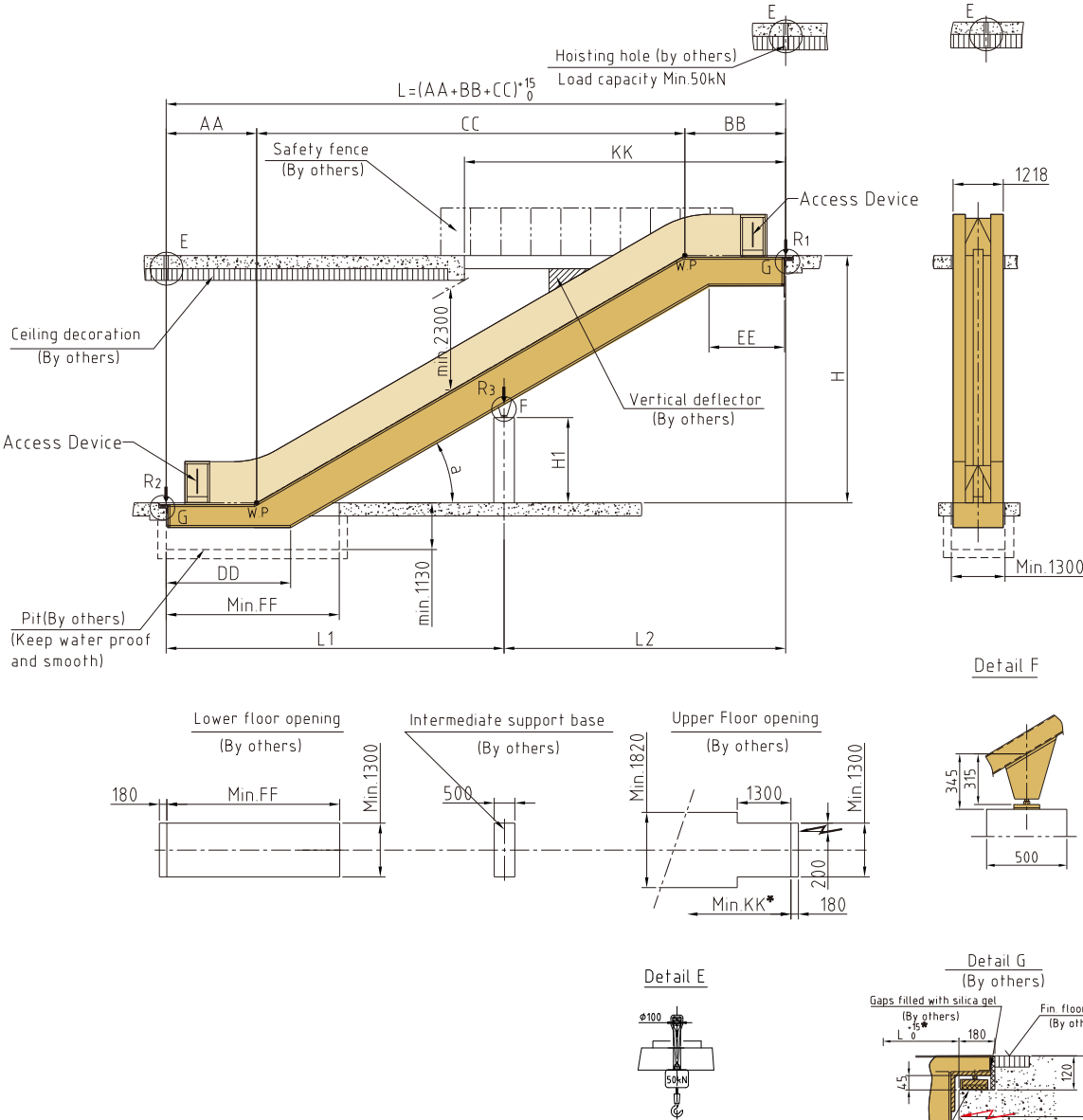
A	1000	1200	1400
B	1310	1510	1710
C	1595	1795	1995
D	1670	1870	2070

Vertical balustrade

A	1000	1200	1400
B	1237	1437	1637
C	1595	1795	1995
D	1670	1870	2070

- Note:
- 1.Mark:
- ① Mark*1:Supports need to be in true level
 - ② Mark*2:If there is pit, pit need to be water proof and smooth
 - ③ Mark*3: If dimension D is changed, the dimension marked should be adjusted
- 2.According to EN115, the entrance of bothing landing must have enough area to facilitate the traffic flow
- 3.If one of the following situations is met, the dimensions with mark * shall be extended 500mm.
- (1)double drive
 - (2)VVVF
 - (3)Main power 200Vgrade and motor power more than 7.5KW.
4. All dimensions refer to finished dimension are in mm.

A	1000	1200	1400
Reaction Force (KN)			
R1	55	64	73
R2	53	61	69
R3	90	110	125
R4	5	5	5



Reaction Force (KN)	
W/o intermediate support	With one intermediate support
R1=3.35xL+15.5	R1=3.35xL2+11.5
R2=3.35xL+10	R2=3.35xL1+4.5
	R3=3.35xL+3.5
Note: L,L1,L2 is in meter	

Type	a	AA	BB	CC	DD	EE	FF	KK
FEB-302	30°	2195	2449	H X 1.732	2466	2118	4200	7800
FEB-352	35°	2229	2510	H X 1.428	2560	2114	4000	7000
FEB-303	30°	2595	2964	H X 1.732	2866	2518	4600	8300

- NOTE:
- If conveyors are located adjacent to escalators, the requirements for the interface between the escalator and the building shall meet the national standard(EN115-1:2017);
 - Access restriction device shall be provided at the ends of the conveyors
 - If there are escalators, devices and safety signs shall be provided to prevent the shopping carts from accessing the escalators;
 - Devices and safety signs shall be provided at the ends of conveyors to prevent persons from getting into the conveyors;
 - At the exit(s) of each individual shopping cart conveyor a sufficient unrestricted area shall be available to accommodate persons and shopping carts. The width of the unrestricted area shall be at least correspond to the distance between the outer edges of the balustrade plus 400 mm on each side. The depth shall be at least 3.00 m measured from the end of the balustrade. It shall be permissible to reduce it to 2.50 m if the width of the unrestricted area is increased to at least double the distance between the outer edges of the balustrade plus 400 mm on each side.
 - Altitude of the placed econveyors shall be no greater than 1000m.In case of particular,please contact SJEC.
 - Client shall provide the intermediate support base which can be made by the reinforced concrete or metallic structure in right position in case of horizontal distance L over 15 m.

Project Highlight



Sevilla metro, Spain



Suzhou railway station, china.



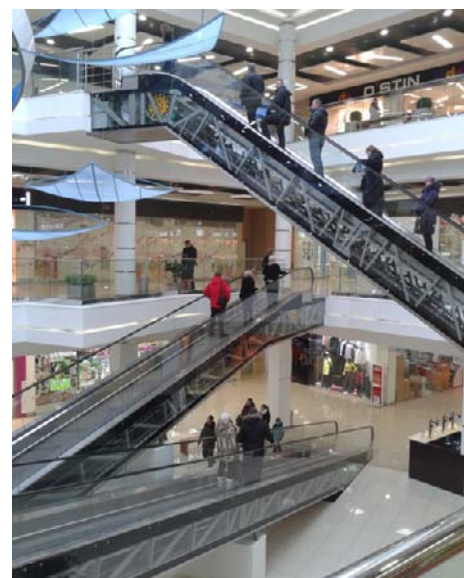
Cologne, Germany



Saturn Mall, Greece



House of Fraser Shopping Mall, England



Project Highlight



KCIC Halim Station, Indonesia



Rio de Janeiro Airport, Brazil



Chennai train station, India



ARTIC, USA



Metrosol-Parasol, Spain



ORIENTAL ARC, China



Hamburg Mobelhaus Shopping Center, Germany



BMW North Shore, New Zealand